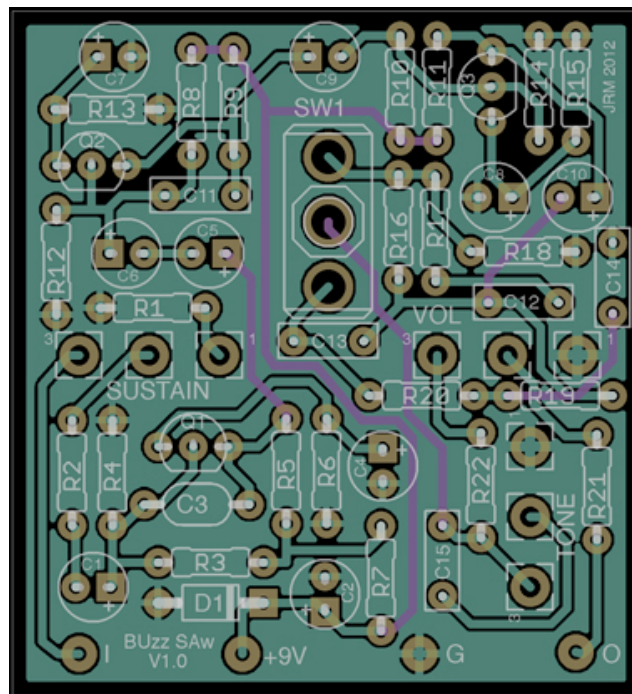


Buzz SAW

Project by 1776 Effects/JRM
©2012



This project is based off the Roland Bee Baa. There is no boost switch in this project like the original and it utilizes 2N5088 transistors. It's also designed to fit into a 1590B enclosure.

Resistors

R1	1k
R2	1k
R3	100k
R4	15k
R5	10k
R6	1k8
R7	1k
R8	100k
R9	10k
R10	100k
R11	10k
R12	15k
R13	1k8
R14	15k
R15	1k8
R16	33k
R17	47k
R18	10k
R19	47k
R20	22k
R21	47k
R22	68k

Capacitors

C1	1uF
C2	47uF
C3	100pF
C4	10uF
C5	1uF
C6	1uF
C7	10uF
C8	10uF
C9	1uF
C10	1uF
C11	4n7
C12	4n7
C13	2n2
C14	100nF
C15	22nF

Diodes

D1	1N4001
----	--------

Transistors

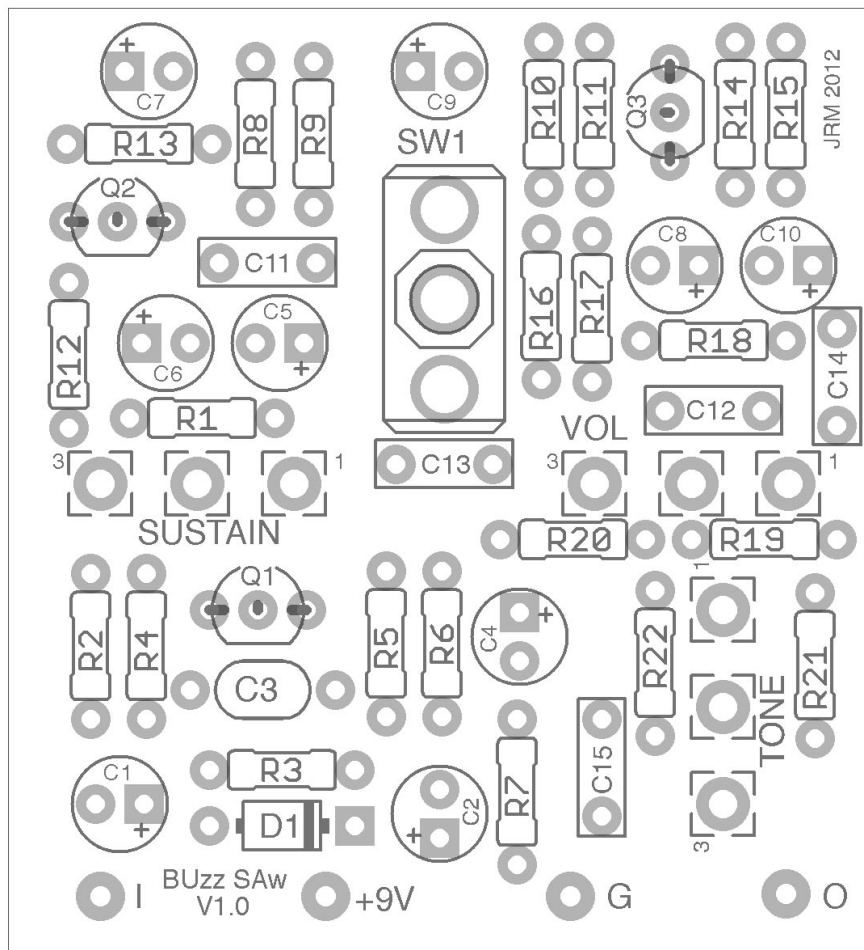
Q1-Q3	2N5088
-------	--------

Potentiometers

Sustain	100kA
Tone	100kA
Volume	100kA

Tone switch (BEE/BAA)

SPDT (ON-ON)



This document and
 board layout is
 designed for personal
 use only but boards
 can be purchased and
 used commercially
 with written
 authorization from the
 owner. One-Offs for
 others are permitted!
 1776 Effects/JRM
 ©2012

